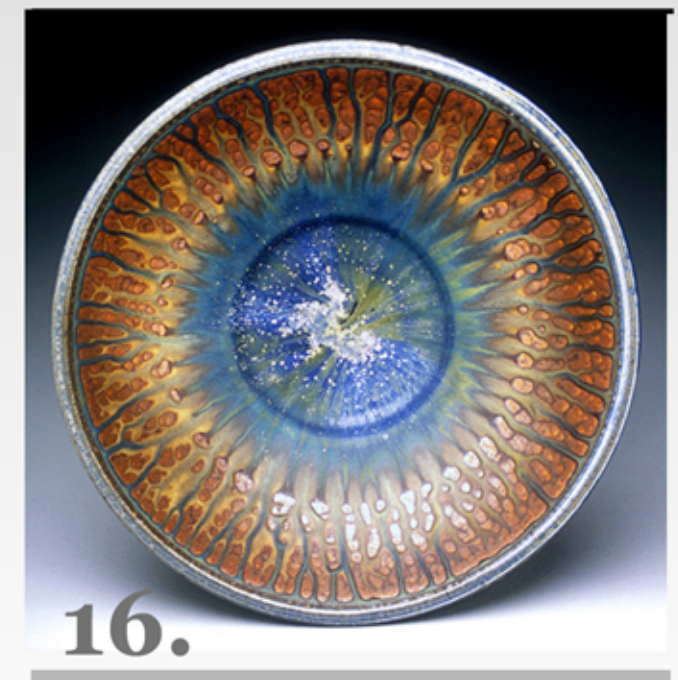
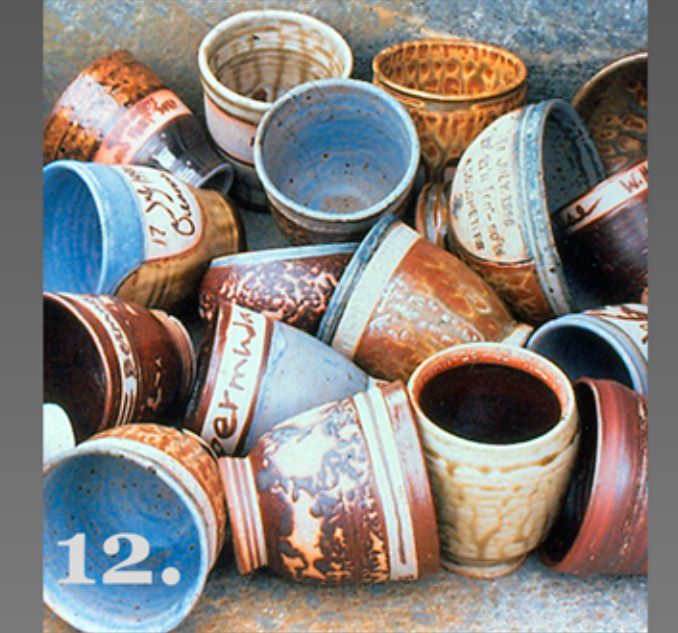
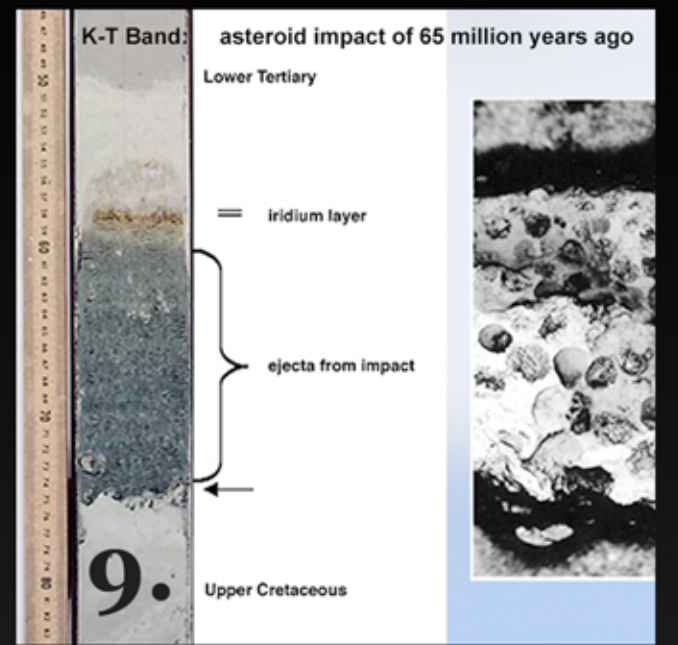
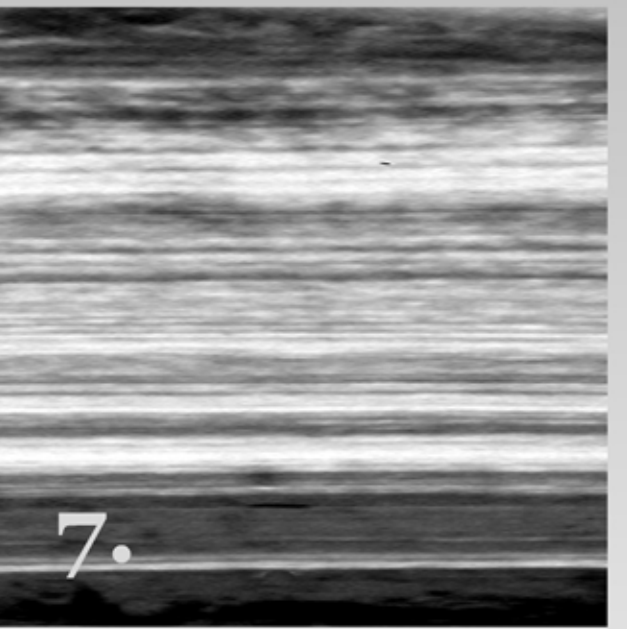
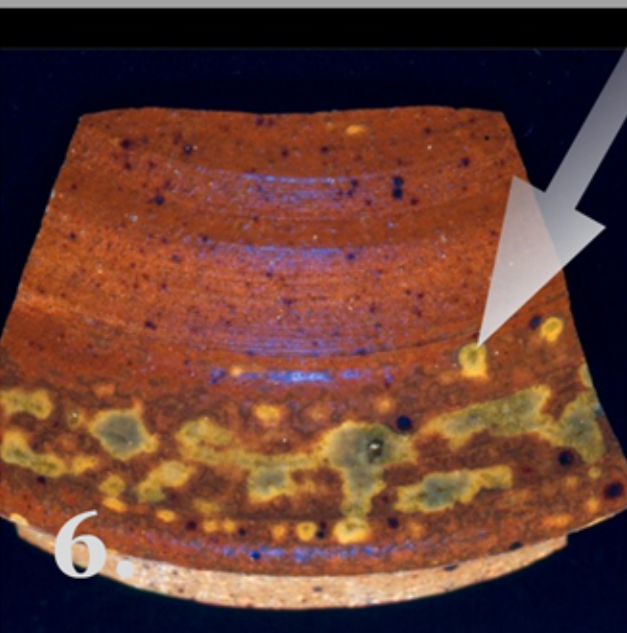
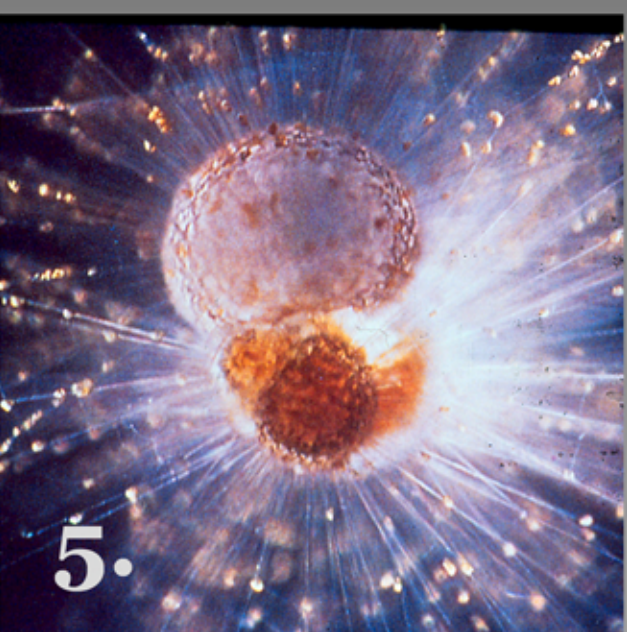
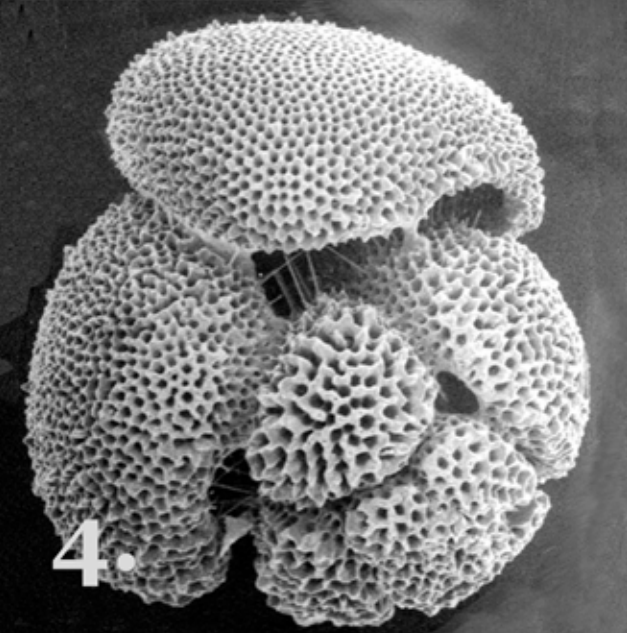
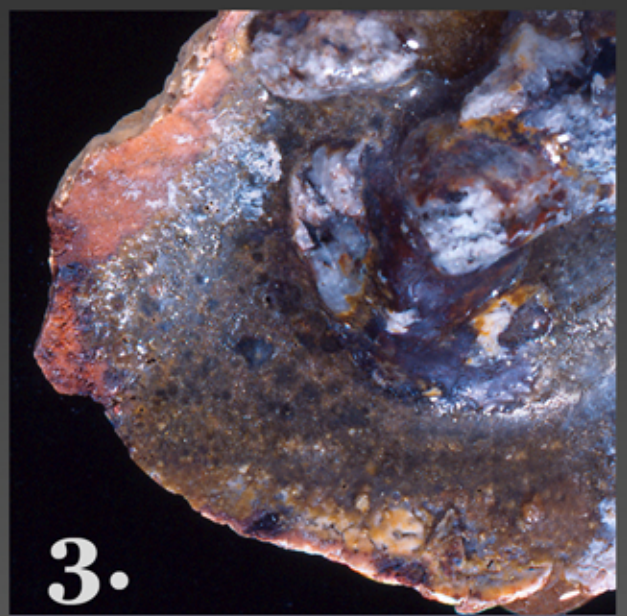
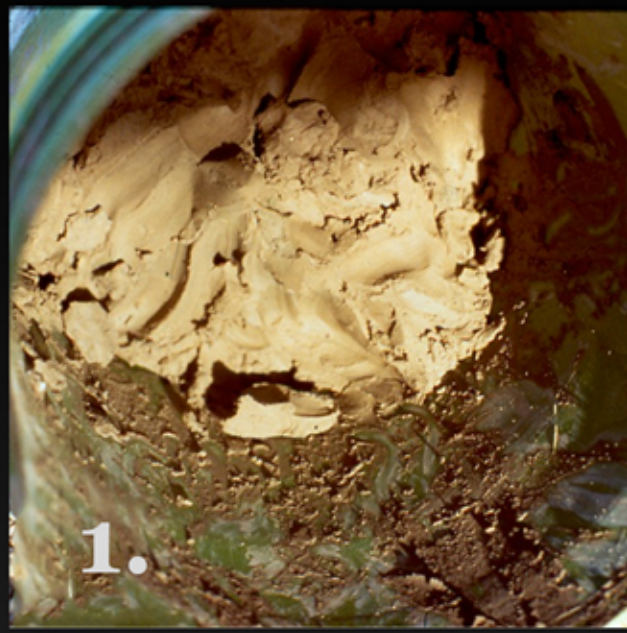


# WHERE THE SEAFLOOR MELTS A Worldview



**“Temperature means nothing unless time goes with it.”**  
— Jim Bailey, kiln builder

Bowl above: evenly applied sediment melted into this pattern during firing to 2340°F.

1. Bucket of ocean sediment.
2. Kiln spy hole into which sediment was first tested
3. Fired glob of mud
4. Foraminifera shells that report on climate temperatures at varied times
5. Live foraminifera
6. Sediment with foram shells fired on stoneware clay
7. Layers of anoxic Black Sea sediment in a split core sample.
7. Bucket of ocean sediment
8. Core archive, Woods Hole Oceanographic Institution
9. K-T Band shows asteroid impact of 65 MYA
10. Screenshot of folders containing information on mud-glazes I've used
11. Raw mud samples from places named.
12. First samples from 7 places emerged from first firing of new kiln.
13. Sampler bowl showing individuality of sediments named.
14. First photo of melted sediment bowl looked like an eye.
15. 'Big' story of drifting continents, asteroid dust and Snowball Earth.
16. The "Cosmic Magma Bowl" — sometimes I got lucky!